

1-D Probe Adaptor Module, Model DA001



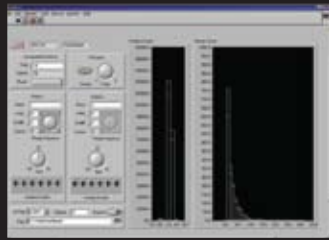
ADVANTAGES

- Allows host computer to communicate easily with older instruments such as the PCASP-X, FSSP, CSASP, GBPP, & OAP-2XX series probes.
- Designed to replace older PMI-1058B probe adaptor module.
- Upgrade to Windows® from DOS.
- Handles 2 probes simultaneously.
- Connects to host computer via serial port.
- Maintains existing cabling.
- Software runs under Windows® and is LabVIEW® compliant.
- Maintains existing 1DM file format or outputs row/column format for spreadsheet usage.
- Software instrument panel interface controls probe and display settings
- Operates with 90-264 VAC 50/60Hz power

DA001 CONTROL PANEL FEATURES

- Graphically depicted control knobs and switches allow for easy usage.
- Vertical axis on plots can be changed with simple double click.
- Default file written in "append" mode so data is not mistakenly lost.
- Output file location, name, and format can be easily changed from the control panel.
- Software provided as a LabVIEW® executable.
- LabVIEW® software can be readily modified to meet user needs.

DA001 Instrument Control Panel, shown with a PCASP-X sampling room air



2545 Central Ave
Boulder, Colorado
80301-5727 USA
[P] 303.440.5576
[F] 303.440.1965



www.dropletmeasurement.com
info@dropletmeasurement.com